

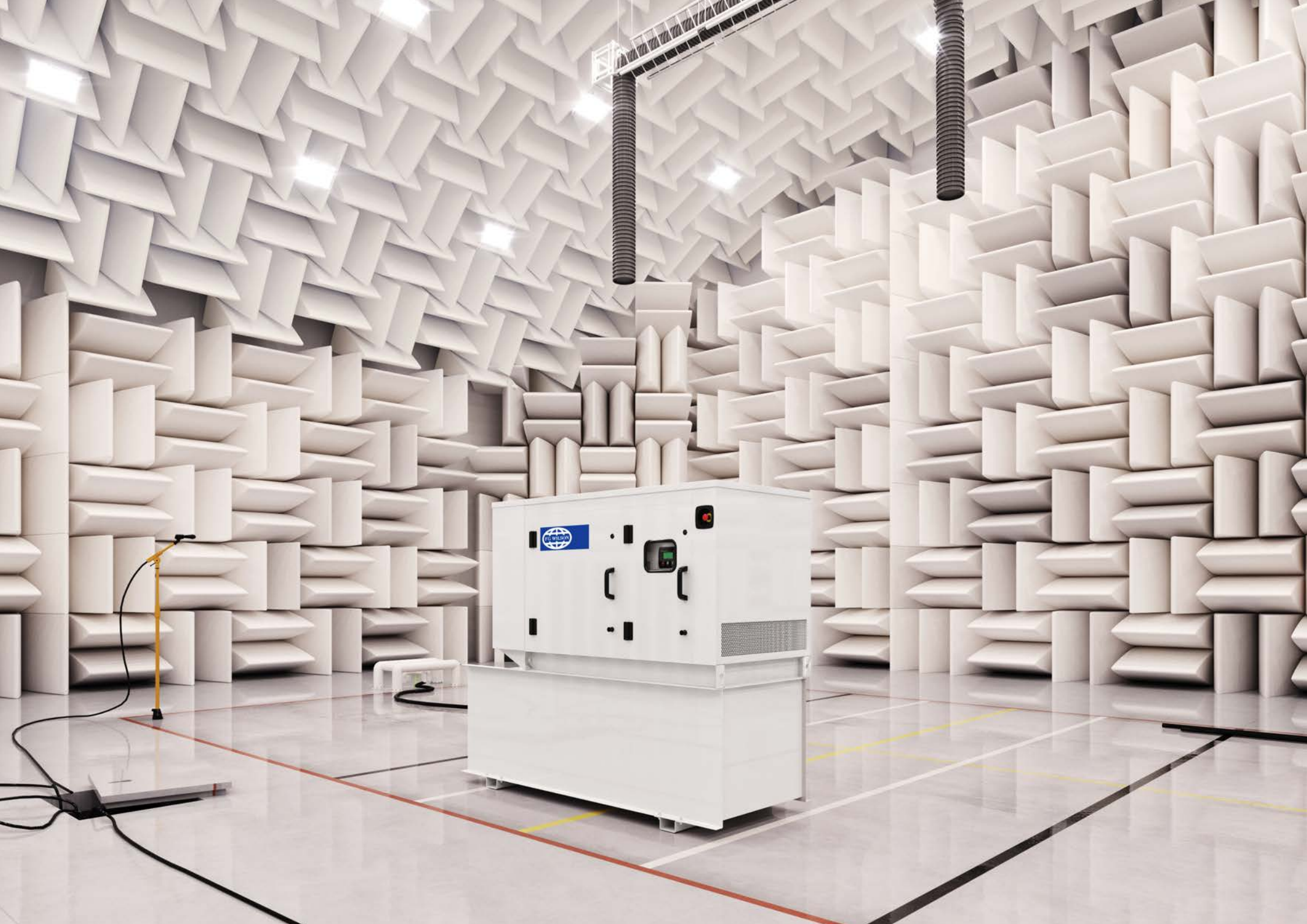


# UNIVERSAL PRODUCT RANGE

Performance | Durability | Serviceability







The Universal range of generator sets is designed to power your every need.

With an enhanced choice of power nodes, this range is engineered for optimum performance in diverse applications including construction, residential, retail and telecommunications. The three levels of sound attenuated enclosures offer super silent running which is ideal in residential locations.

For a life without interruptions, trust FG Wilson.

# Open Set Range

A series of key enhancements have been introduced to the Universal Range. Most notable is the common sense component arrangement, facilitating greater operator access and serviceability. This range employs the power and efficiency delivered by world-renowned Perkins engines.



Single side access is provided for fuel filter, oil filter and coolant, ensuring minimal maintenance time and maximum generator set operation. The fuel fill and gauge are positioned together on the opposite side of the fuel tank for easy fill and monitoring.



Robust electrical components including relays, AVR and MCB's are grouped and centralised within the control panel. They are easily accessed through a lockable side hinged door. Cable access is gained directly underneath the control panel for ease of installation.

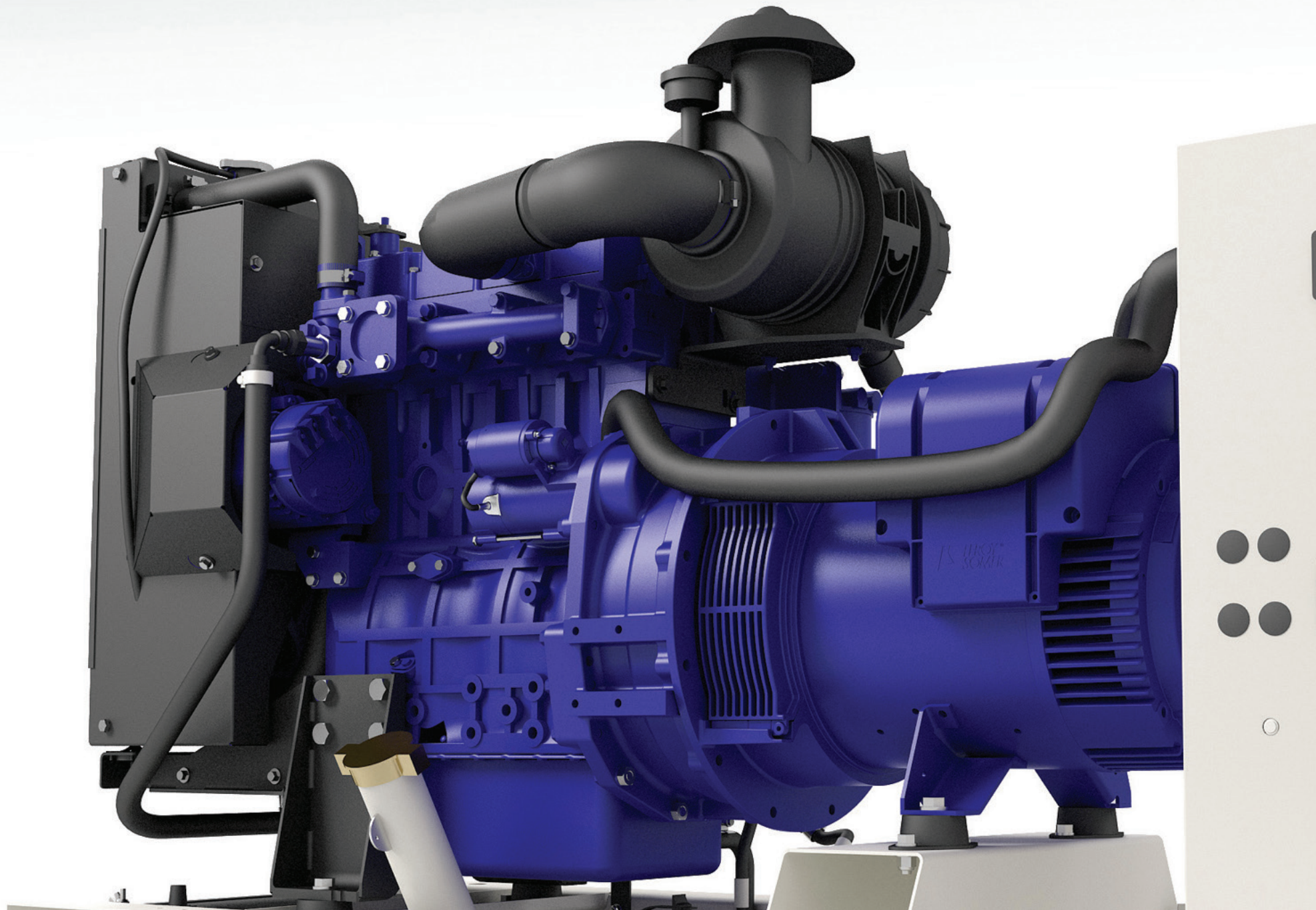


The skid baseframe provides lifting points as standard, reducing the risk of damage during transportation and installation. Several options for fuel tanks are offered from 8 hours running at full load in prime applications up to large 2000L extended tanks.



The battery is positioned directly underneath the radiator for convenient accessibility. The coolant level can be easily viewed or topped up via the access point at the top of the radiator.





The choice of control panels and options, ensure this range offers a robust, reliable product to power your every need. Customer choice is enhanced with a comprehensive range of options available across all power nodes, including a 1,000 hours extended service interval.

# Metal Enclosed Range

Our metal enclosure option, proven in the marketplace for many years, has been further enhanced to continue to provide the best service and maintenance access possible, whilst maintaining its original design.



The robust single piece roof incorporates a flush mounted access cap with compression seal, allowing access to the single point lift, whilst providing excellent protection against water ingress. With three levels of sound attenuated enclosures, FG Wilson can offer market leading noise levels for all types of application.



The metal enclosure is manufactured from high grade steel, protected by powder coat paint, to provide a durable, sturdy enclosure.



The baseframe featuring lifting points for ease of installation and handling, extends beyond the enclosure, further protecting against damage during transportation and installation.



The emergency stop button is conveniently located next to the control panel on the outside of the enclosure. Generator set running conditions can be easily monitored via the large viewing window. For added security, all doors are fitted with lockable latches.



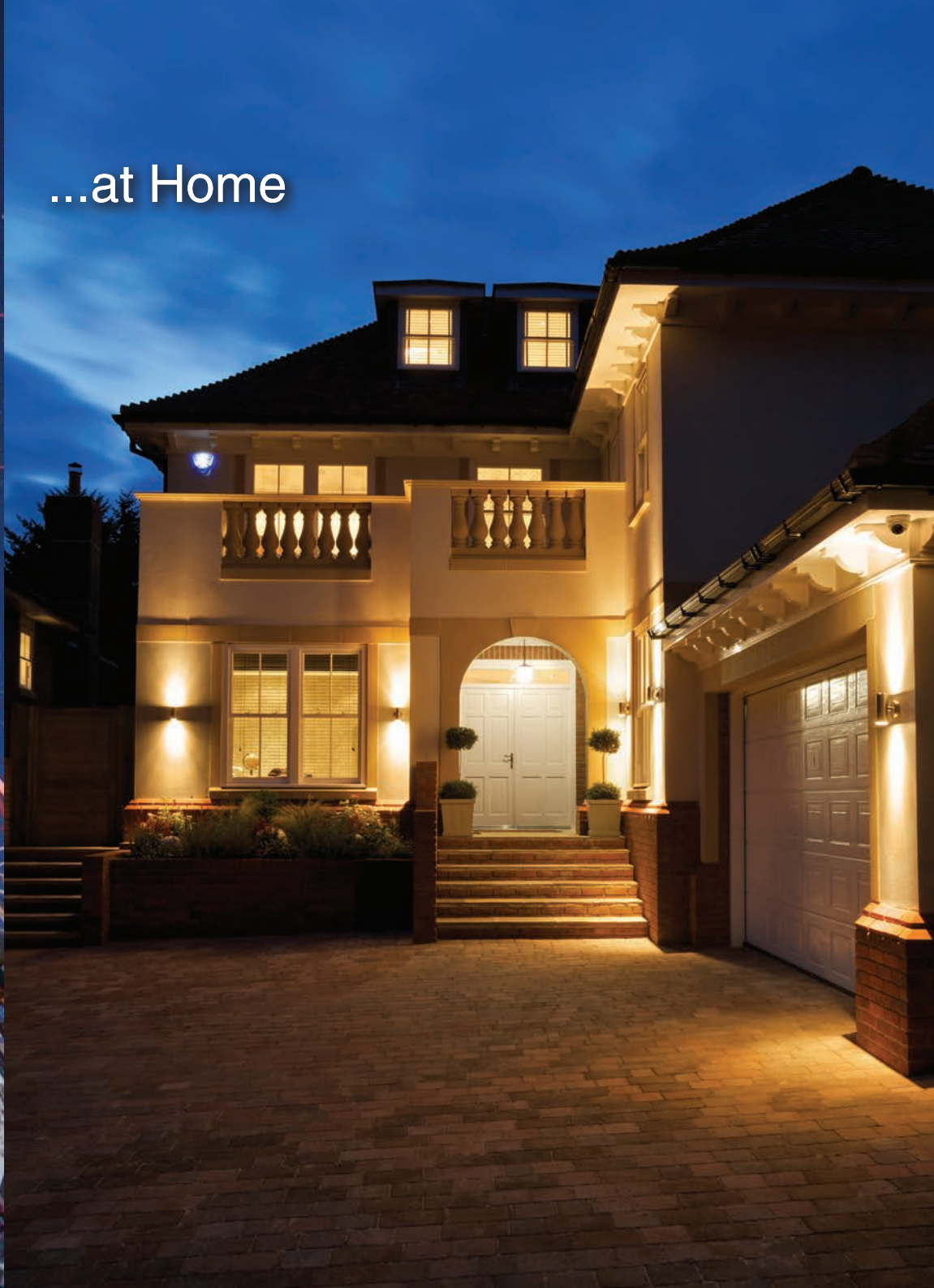


This range of enclosures offer excellent service and maintenance access. The control panel tower mounted on the side of the generator set is accessed via the full height door, allowing access to the control panel including all components and wiring. Side hinged doors open to 180° and can be lifted off when opened at 90°. Combined with removable front and rear access panels, the enclosure provides optimal access for all servicing and maintenance tasks.

Powering your every need...  
...in Telecommunications



...at Home





...in Retail



...in Construction





# FG100

A suite of fully digital control panels accompany the Universal Range. Fitted as standard the FG100 digital control panel is our standard/default controller across our product range. The FG100 offers simple, intuitive menu navigation and control of your generator set operations, key features such as remote monitoring allow you to control your generator set with ease.



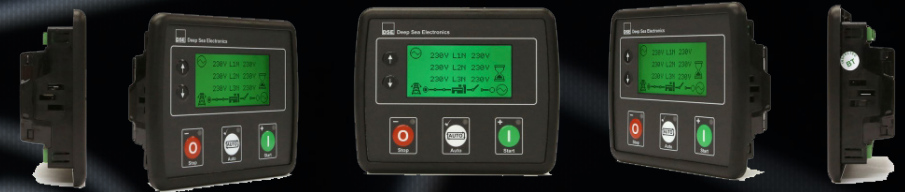
## Deep Sea 4520

- Large back-lit icon LCD display
- Field upgradable plug-in communication modules
- 400 event logs, full snapshot
- Most parameters editable via front panel
- 6 configurable digital inputs / 5 configurable digital outputs
- 3 configurable analog inputs
- CANBUS-J1939 (for electronic engines)
- 3 configurable service alarms
- Power protection
- Overload IDMT protection
- Current & voltage unbalance protection
- Idle speed control
- Battery charge run enabled
- 4 quadrant generator set power counters
- Configurable from USB
- Simple firmware upgrades via USB port



# Deep Sea 4520

Provided as an optional upgrade, the Deep Sea digital control panel, provides simple, intuitive control of your generator set. Key information including diagnostics, is displayed via the LCD screen and LED's using universally recognised symbols.



## Deep Sea 4520

- Large back-lit icon LCD display.
- 3-phase generator sensing
- Generator & load power monitoring (kW, kV A, kV Ar, pf)
- Generator overload protection (kW).
- Configurable inputs & outputs.
- Fuel and start outputs (configurable on CAN).
- Configurable DC, volt-free and staged loading outputs.
- CAN & alternator speed sensing.
- Engine speed protection, engine hours counter, engine pre-heat, engine run-time scheduler, engine idle control for start/stop.
- Battery voltage monitoring.
- Configurable event log (50).
- Engine maintenance alarms (3)

\*PowerWizard panels are optional on Perkins powered models within the Universal Range.

# Technical Data

| Universal Range Models |           |            |       |      |         |      |       |      |      |         |      |
|------------------------|-----------|------------|-------|------|---------|------|-------|------|------|---------|------|
| Model                  | Engine    | Alternator | 50 Hz |      |         |      | 60 Hz |      |      |         |      |
|                        |           |            | Prime |      | Standby |      | Prime |      |      | Standby |      |
|                        |           |            | kVA   | kW   | kVA     | kW   | kVA   | kW   | kVA  | kW      |      |
| P7.5-1S                | 403A-11G  | LLB1114B   | 6.8   | 6.8  | 7.5     | 7.5  | –     | –    | –    | –       | –    |
| P7.5-4S                | 403D-11G  | LLB1114D   | 6.8   | 6.8  | 7.5     | 7.5  | 8.0   | 8.0  | 8.8  | 8.8     | 8.8  |
| P9.5-1                 | 403A-11G  | LL1114B/D  | 8.5   | 6.8  | 9.5     | 7.6  | –     | –    | –    | –       | –    |
| P9.5-4                 | 403D-11G  | LL1114B/D  | 8.5   | 6.8  | 9.5     | 7.6  | 10.0  | 8.0  | 11.0 | 8.8     | 8.8  |
| P11-6S                 | 403D-15G  | LLB1114F   | 10.0  | 10.0 | 11.0    | 11.0 | 12.0  | 12.0 | 13.0 | 13.0    | 13.0 |
| P12-1S                 | 403A-15G2 | LLB1114F   | 11.0  | 11.0 | 12.0    | 12.0 | –     | –    | –    | –       | –    |
| P13.5-6                | 403D-15G  | LL1114D    | 12.5  | 10.0 | 13.5    | 10.8 | 15.0  | 12.0 | 16.5 | 13.2    | 13.2 |
| P14-6S                 | 404D-22G1 | LLB1114L   | 13.0  | 13.0 | 14.0    | 14.0 | 16.8  | 16.8 | 17.0 | 17.0    | 17.0 |
| P16-1                  | 403A-15G2 | LL1111M    | 14.5  | 11.6 | 16.0    | 12.8 | –     | –    | –    | –       | –    |
| P16.5-1S               | 404A-22G  | LLB1114M   | 15.0  | 15.0 | 16.5    | 16.5 | –     | –    | –    | –       | –    |
| P16.5-6S               | 404D-22G  | LLB1114M   | 15.0  | 15.0 | 16.5    | 16.5 | 17.6  | 17.6 | 19.4 | 19.4    | 19.4 |
| P18-6                  | 404D-22G1 | LL1114H    | 16.5  | 13.2 | 18.0    | 14.4 | 20.0  | 16.0 | 22.0 | 17.6    | 17.6 |
| P22-1                  | 404A-22G  | LL1114M    | 20.0  | 16.0 | 22.0    | 17.6 | –     | –    | –    | –       | –    |
| P22-6                  | 404D-22G  | LL1114M    | 20.0  | 16.0 | 22.0    | 17.6 | 22.5  | 18.0 | 25.0 | 20.0    | 20.0 |



# Standard and Optional Features

## STANDARD FEATURES

Perkins 400 & 1103 series electric power engines

500 hours service interval

EU Stage IIIA emissions compliant

### Fuel Optimised Offering

Engine mounted battery charging alternator

Single element air filter

Low oil pressure shutdown

High coolant temperature shutdown

Alternator IP23 protection

Automatic voltage regulator

DSE 4520 control panel

3 Pole circuit breaker

Robust steel constructed baseframe

Skidbase

### Mechanical governing

Baseframe lifting points

Side rail mounted fuel water separator

BSP fuel sockets for remote fuel tank connection

Coolant drain valve

Engine filled with lube oil

Radiator fan and charging alternator guards

50% antifreeze (protection to -36°C)

## OPTIONAL FEATURES

1,000 hours extended service interval

Single point lift

Three levels of sound attenuated enclosures

DeepSea DSE 7410

DeepSea DSE 7420

Extended capacity fuel tanks

### Dual wall tank offering

Industrial silencer

### Residential silencer

Coolant heater

Volt free contacts for common alarm

Volt free contacts for genset running

Static battery charger

Static battery charger with boost control

Close remote monitoring and control

Distant remote monitoring and control

Automatic transfer switches

CE Certification

Stone guards

Base feet

Neutral earth link

Fuel level shutdown

Fuel level alarm

Fuel level sender and display

Fuel level switch

Low fuel level alarm

4 Pole circuit breaker



[www.FGWilson.com](http://www.FGWilson.com)

---